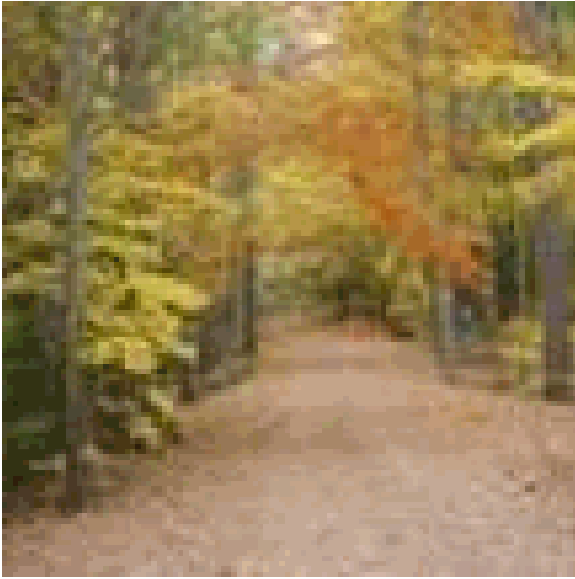


- *Protecting Buxton's Resources*

-
- *Do you know what key resources are present in Buxton?*
 -
 - *Do you know why they matter?*
 -
 - *Do you know what threats they face?*
 -
- *Learn how you can help to conserve these resources for future generations*



The Comprehensive Planning Committee invited Steve Walker of Beginning with Habitat to discuss the following:

- ~Key resources present in Buxton,*
- ~why they matter,*

*~what threats they face,
~and the opportunities Buxton has to conserve these
resources for future generations.*

- *Please come and be a part of Buxton's future*
- *On **Thursday, January 27, 2011, at 6 pm** Steve Walker from **Beginning with Habitat** will conduct a presentation sponsored by your Comprehensive Plan Committee. This presentation will be televised and rebroadcast however we encourage you to attend so that you can participate during the Question and Answer period. To learn more about **Beginning with Habitat**, click [here](#).*

•
•



-



-
-
-
-
-
-

What is Beginning with Habitat?

Beginning with Habitat (BwH), a collaborative program of [federal, state and local agencies and non-governmental organizations](#), is a habitat-based approach to conserving wildlife and plant habitat on a landscape scale. The goal of the program is to maintain sufficient habitat to support all native plant and animal species currently breeding in Maine. BwH compiles habitat information from multiple sources, integrates it into one package, and makes it accessible to towns, land trusts, conservation

organizations and BwH is designed to help local decision makers create a vision for their community, to design a landscape, and to develop a plan that provides habitat for all species and balances future development with conservation. To read more click [here](#).